

# ASSOCIATED WIRELINE SERVICE, Inc.

580-229-0731 • Box 906 • Healdton, Oklahoma 73438

FILING NO. \_\_\_\_\_

COMPANY \_\_\_\_\_

WELL BEDELL #A-3

FIELD BEDELL

COUNTY HASKELL STATE KS

LOCATION \_\_\_\_\_

TYPE SERVICES: \_\_\_\_\_

**INJECTION PROFILE  
W/TEMP.**

SEC. 9 TWP. 27S RGE. 34W

PERMANENT DATUM \_\_\_\_\_ ELEV. 2800

LOG MEASURED FROM \_\_\_\_\_ FT ABOVE PERM DATUM \_\_\_\_\_

ELEV. K.B. \_\_\_\_\_

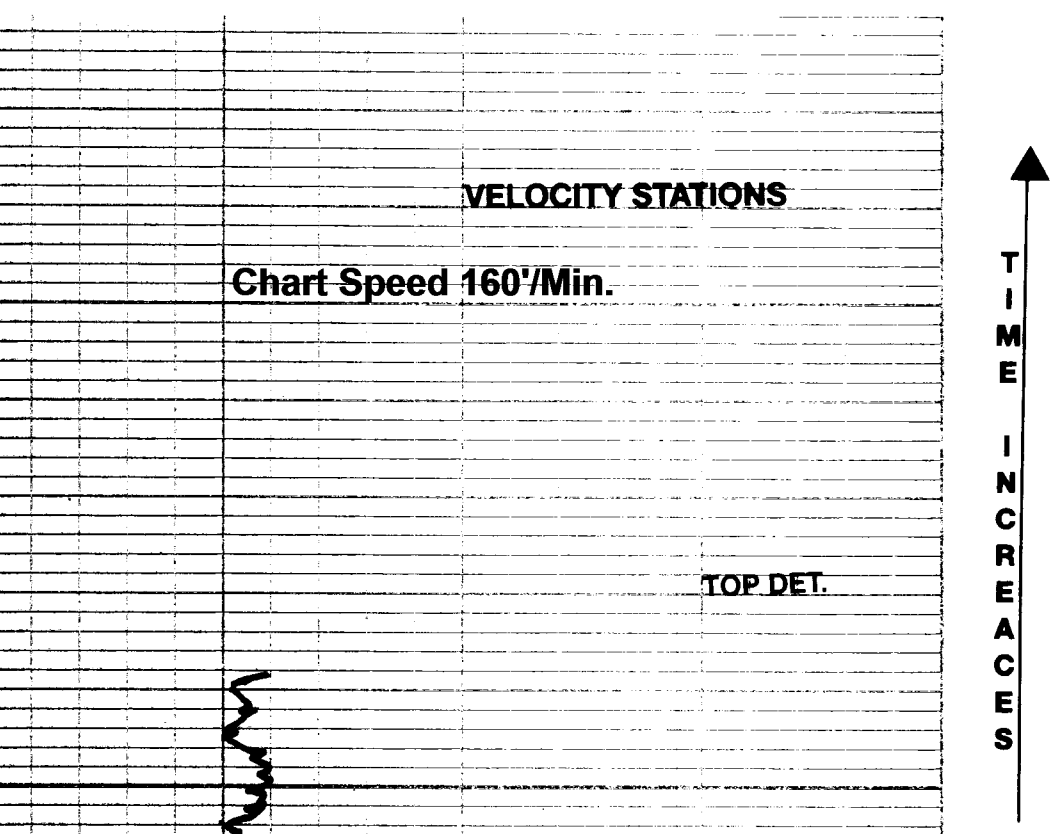
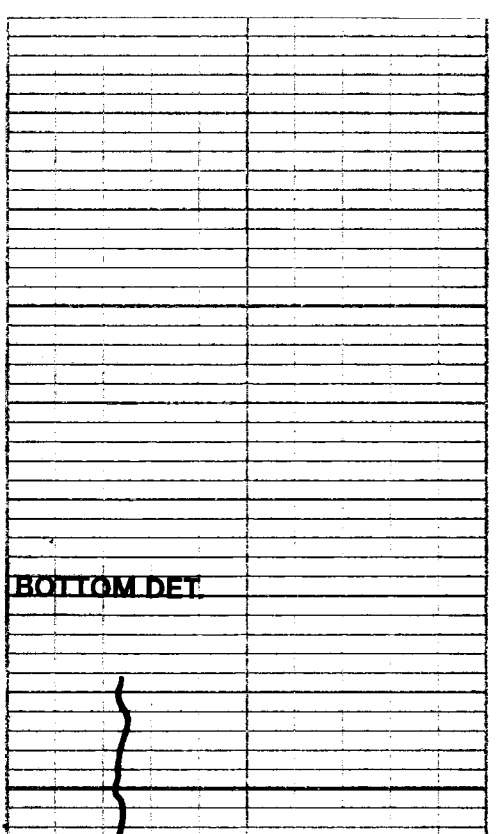
D.F. \_\_\_\_\_

G.L. 2800

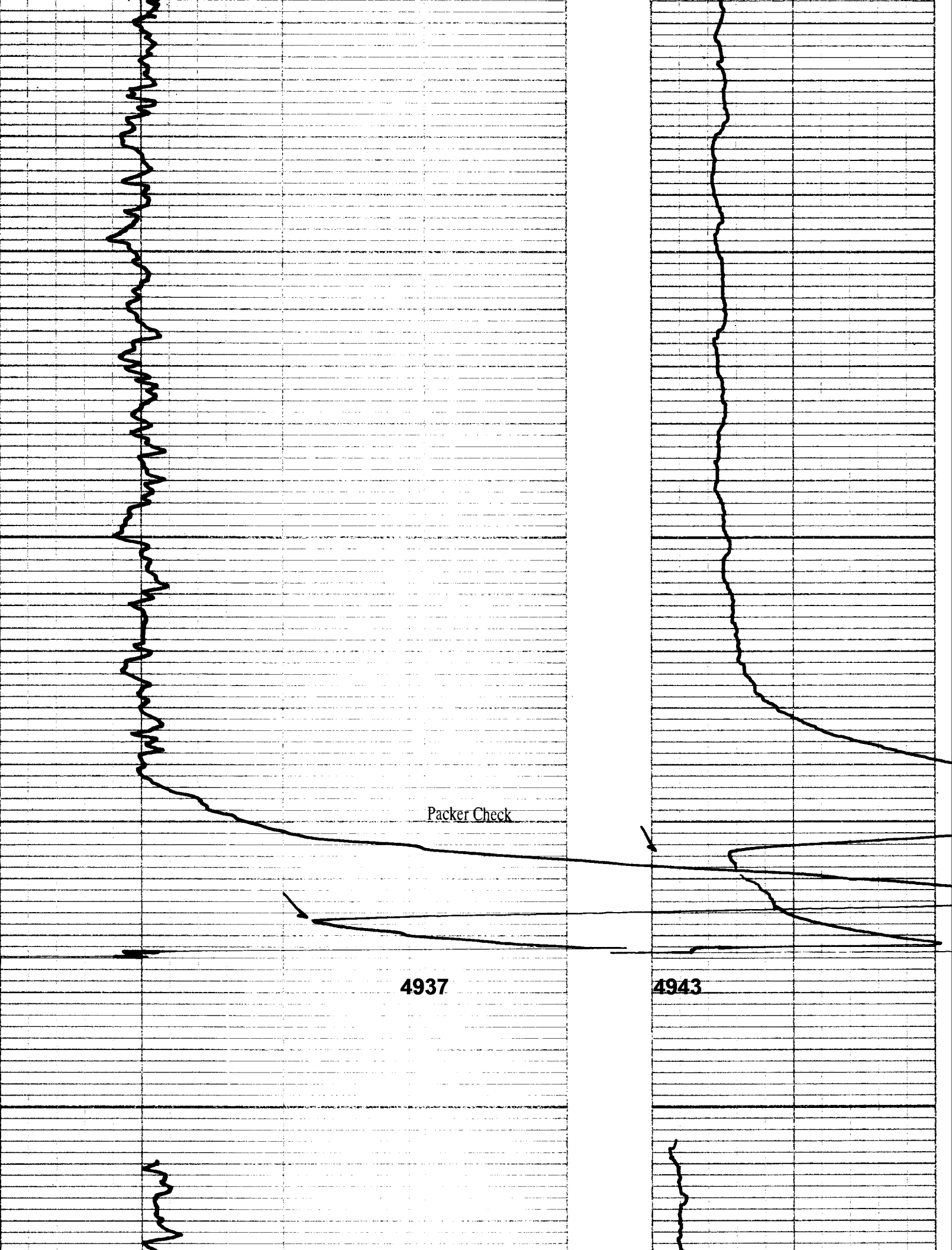
DATE	9/12/2011				
RUN NO.	ONE				
TYPE LOG	INJECTION PROFILE	W/TEMP			
DEPTH-DRILLER	5160				
DEPTH-LOGGED	5143				
BOTTOM LOGGED INTERVAL	5143				
TOP LOGGED INTERVAL	4800				
TYPE FLUID IN HOLE	WATER				
LEVEL	FULL	SIZE			
RECORDING SPEED	25/MIN.	4 1/2"			
TOOL SIZE	1"	2 3/8"			
RECORDED BY	COX				
WITNESSED BY	MR.				

PERFORATIONS: 4990-5023.

REMARKS: SEE NOTE BELOW.



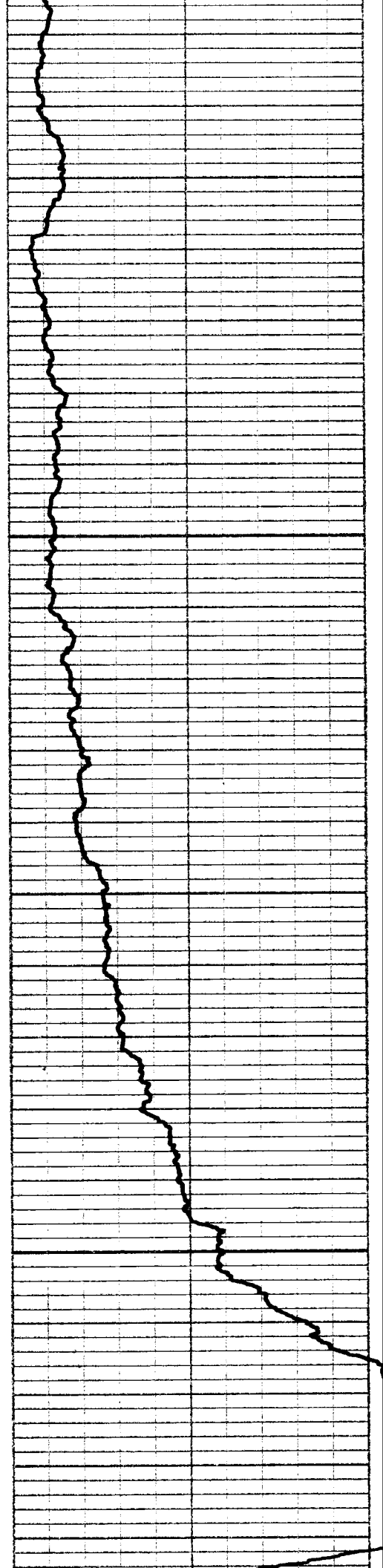
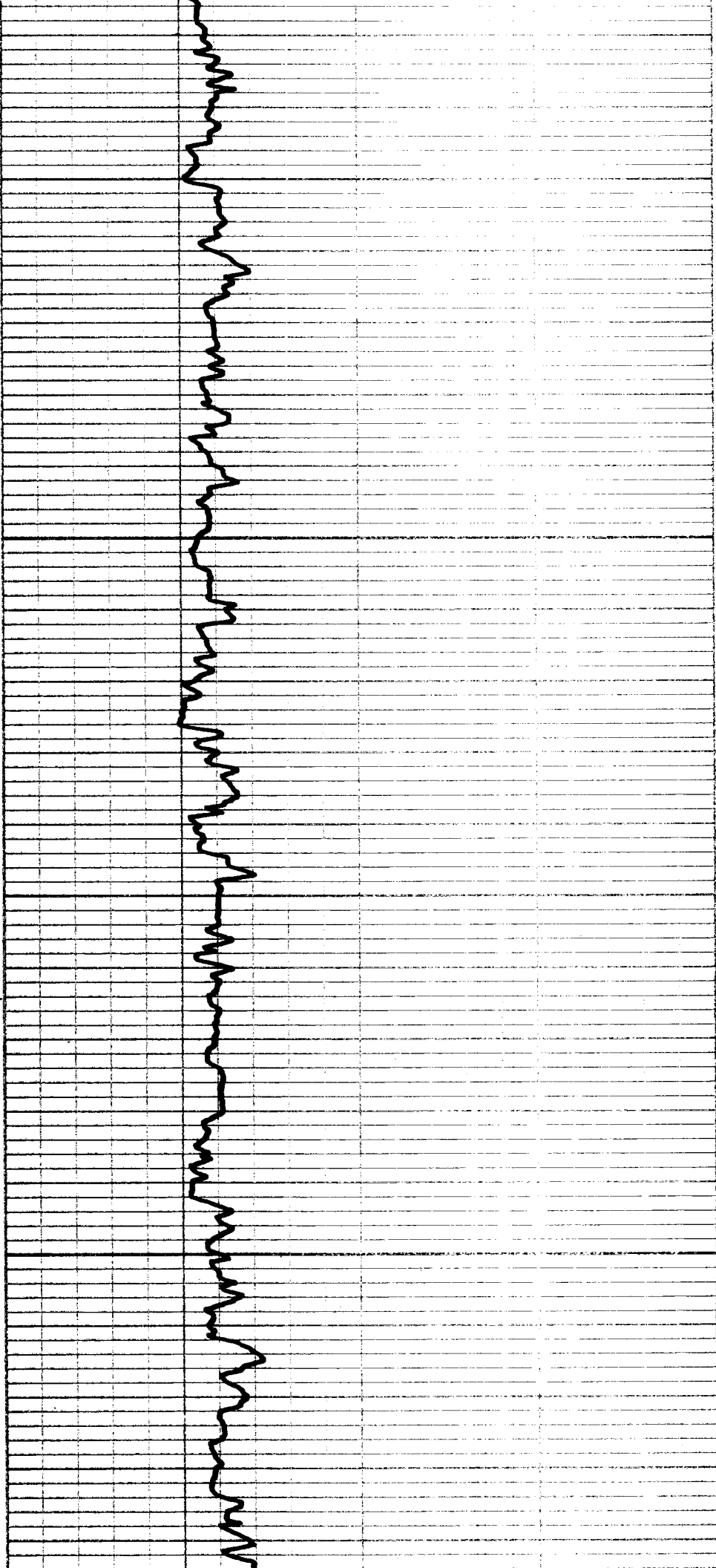
TIME INCREASES

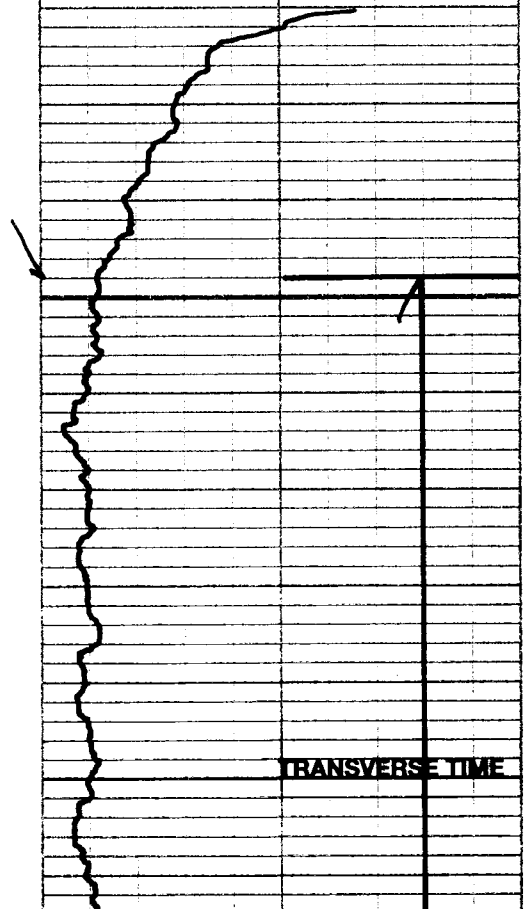
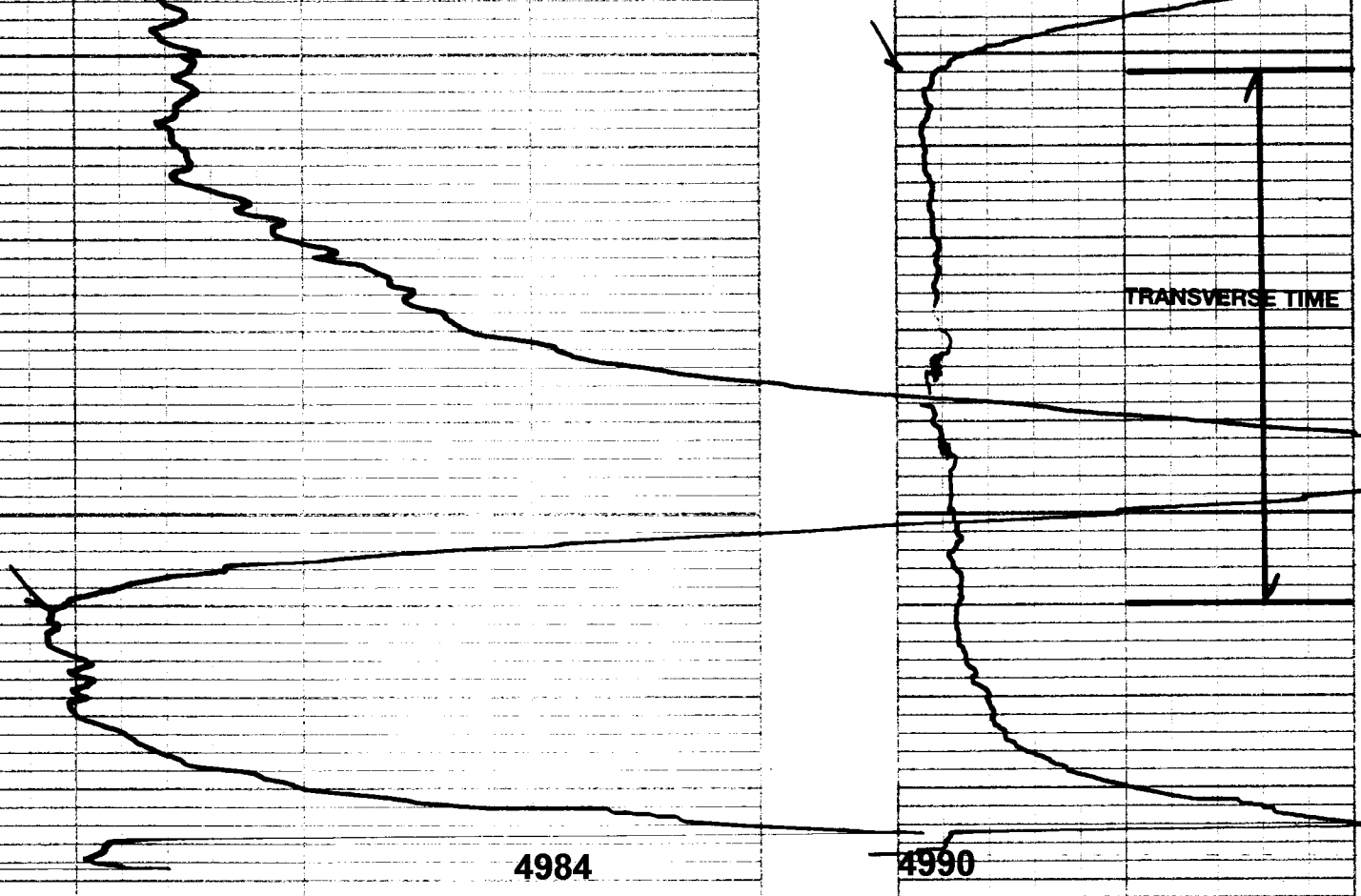


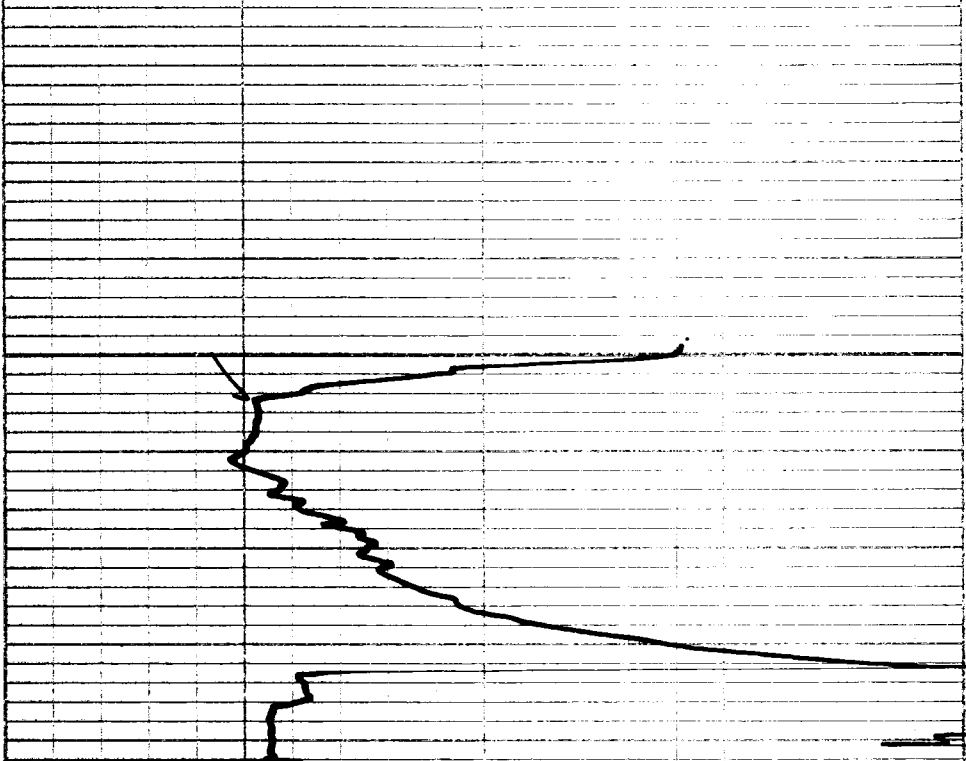
Packer Check

4937

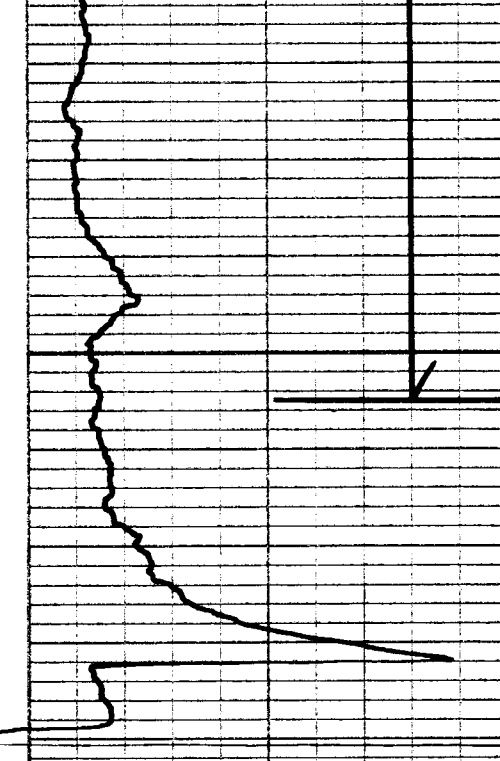
4943





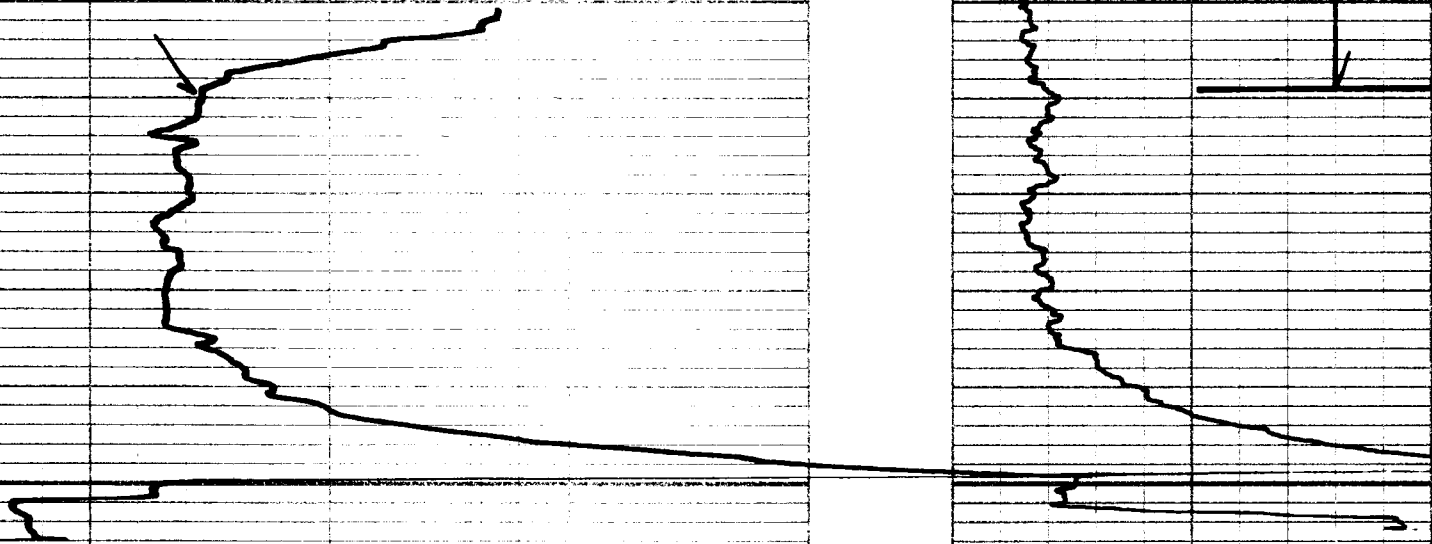


4989



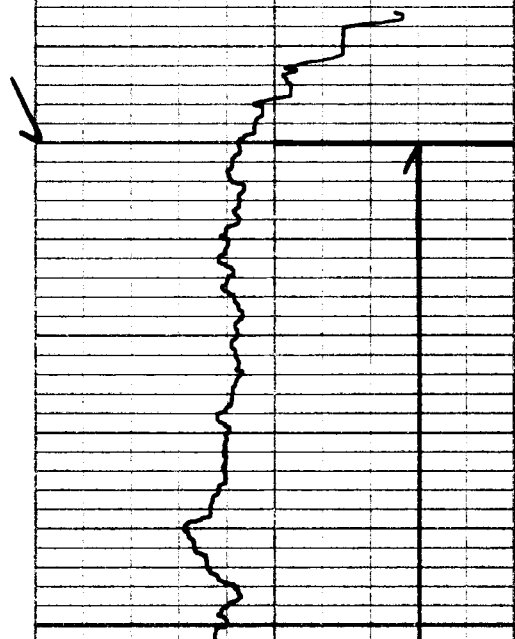
4995

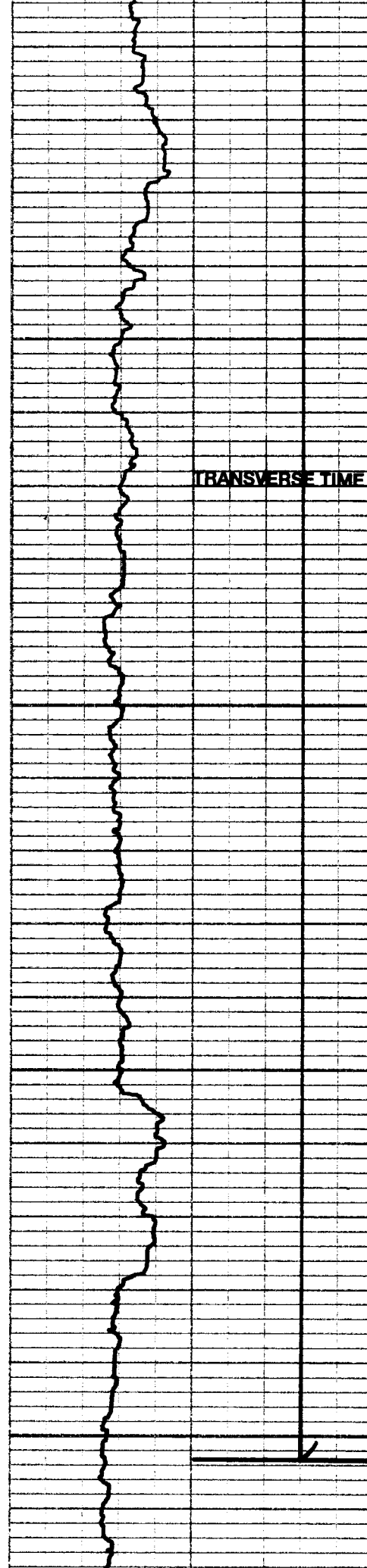
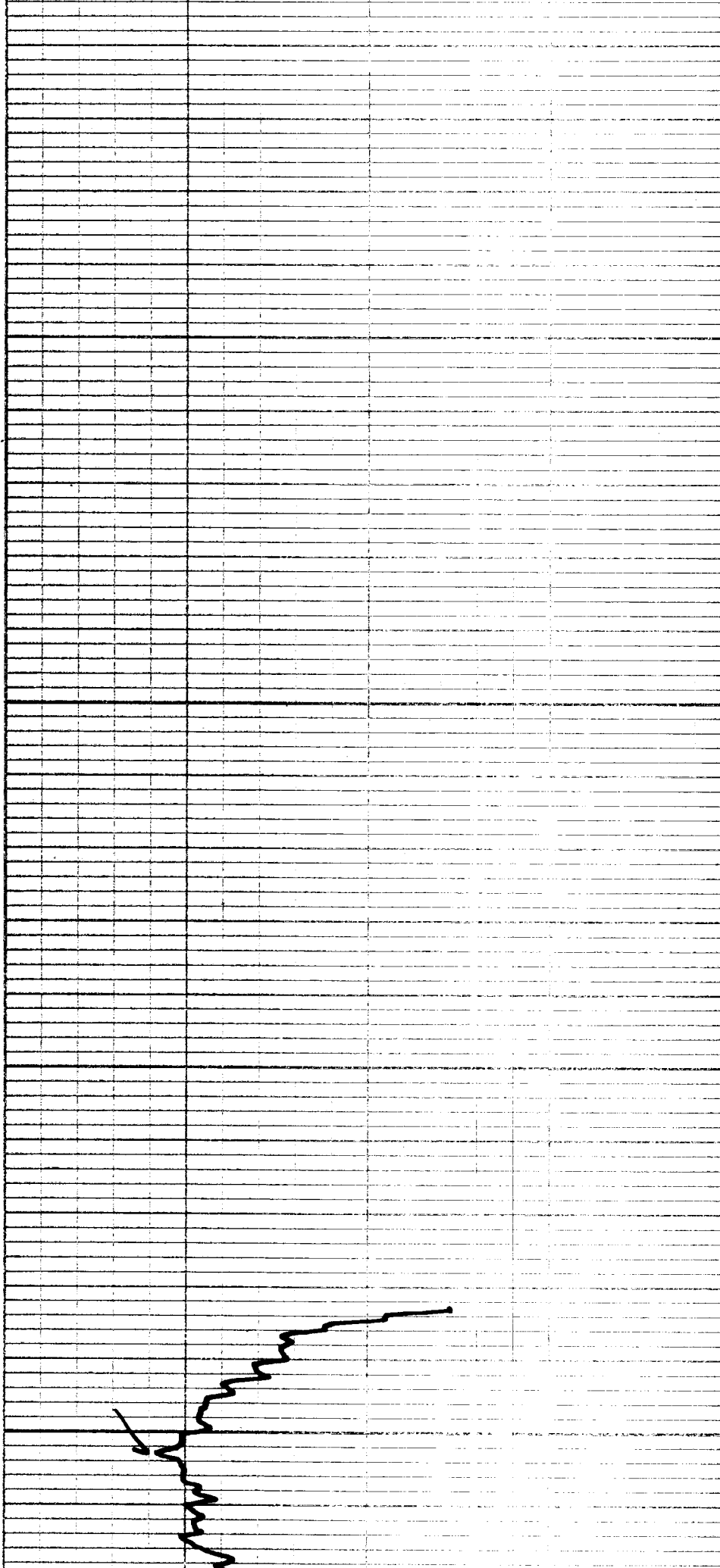
TRANSVERSE TIME

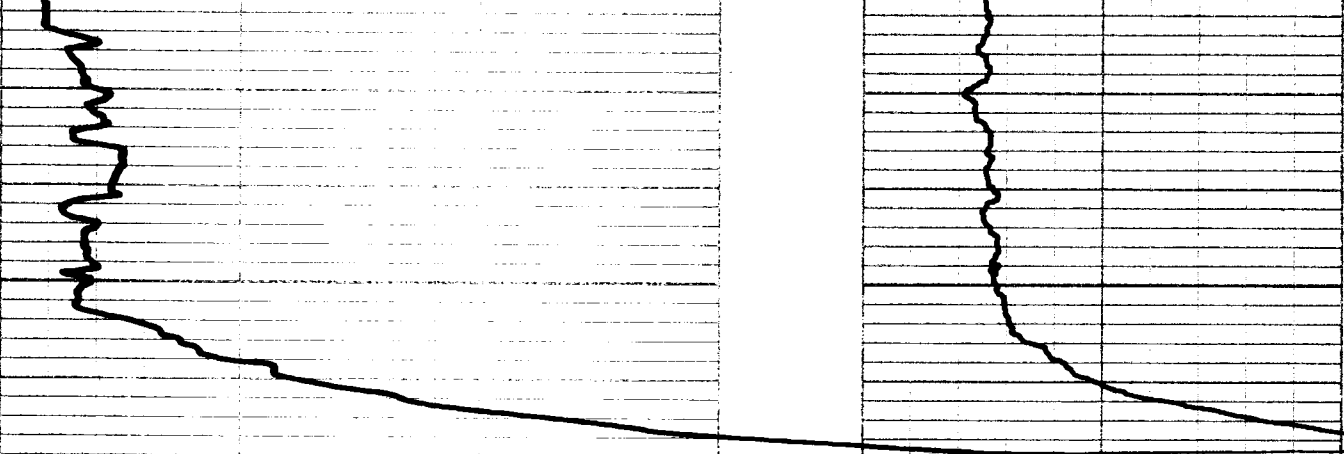


4994

5000



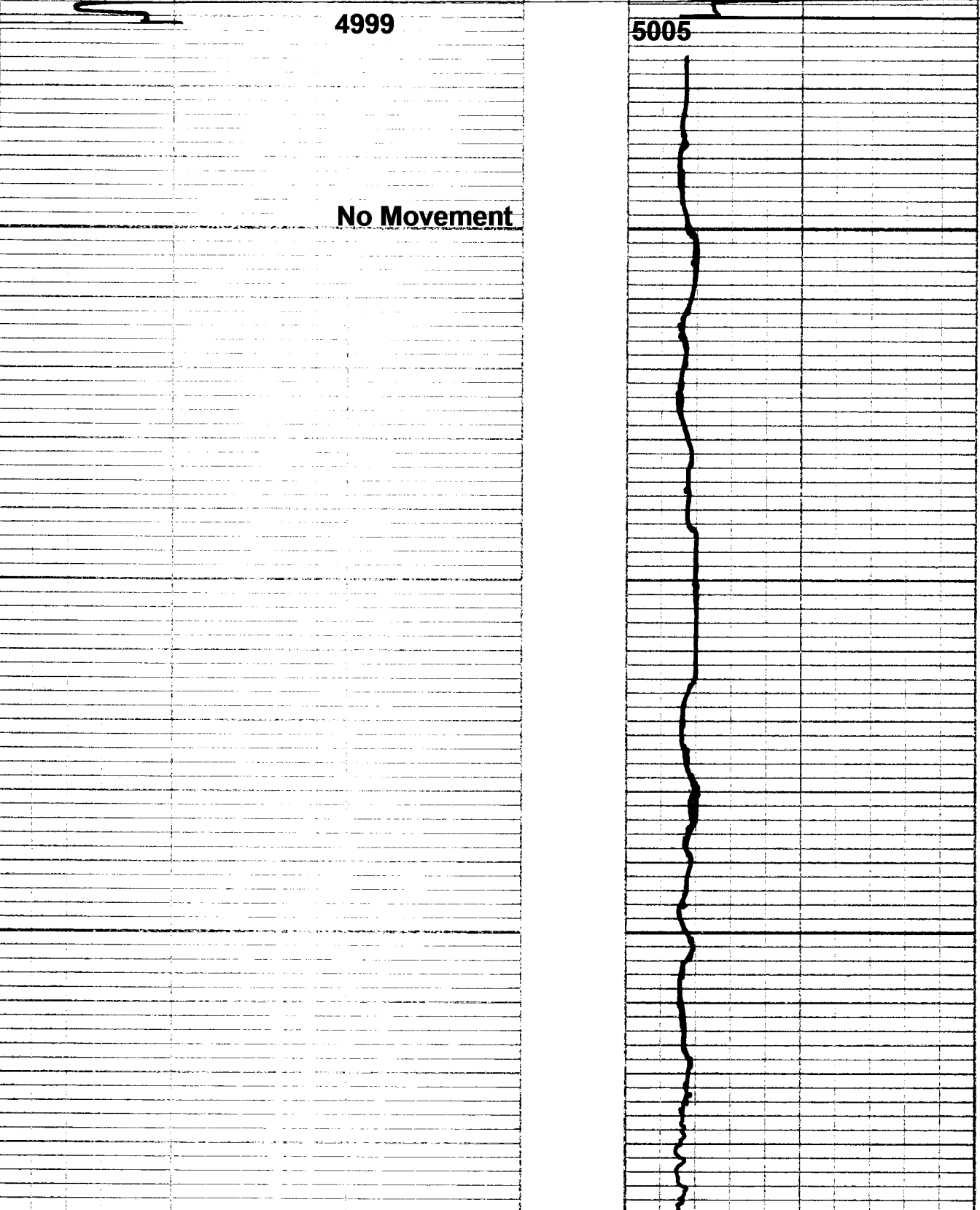




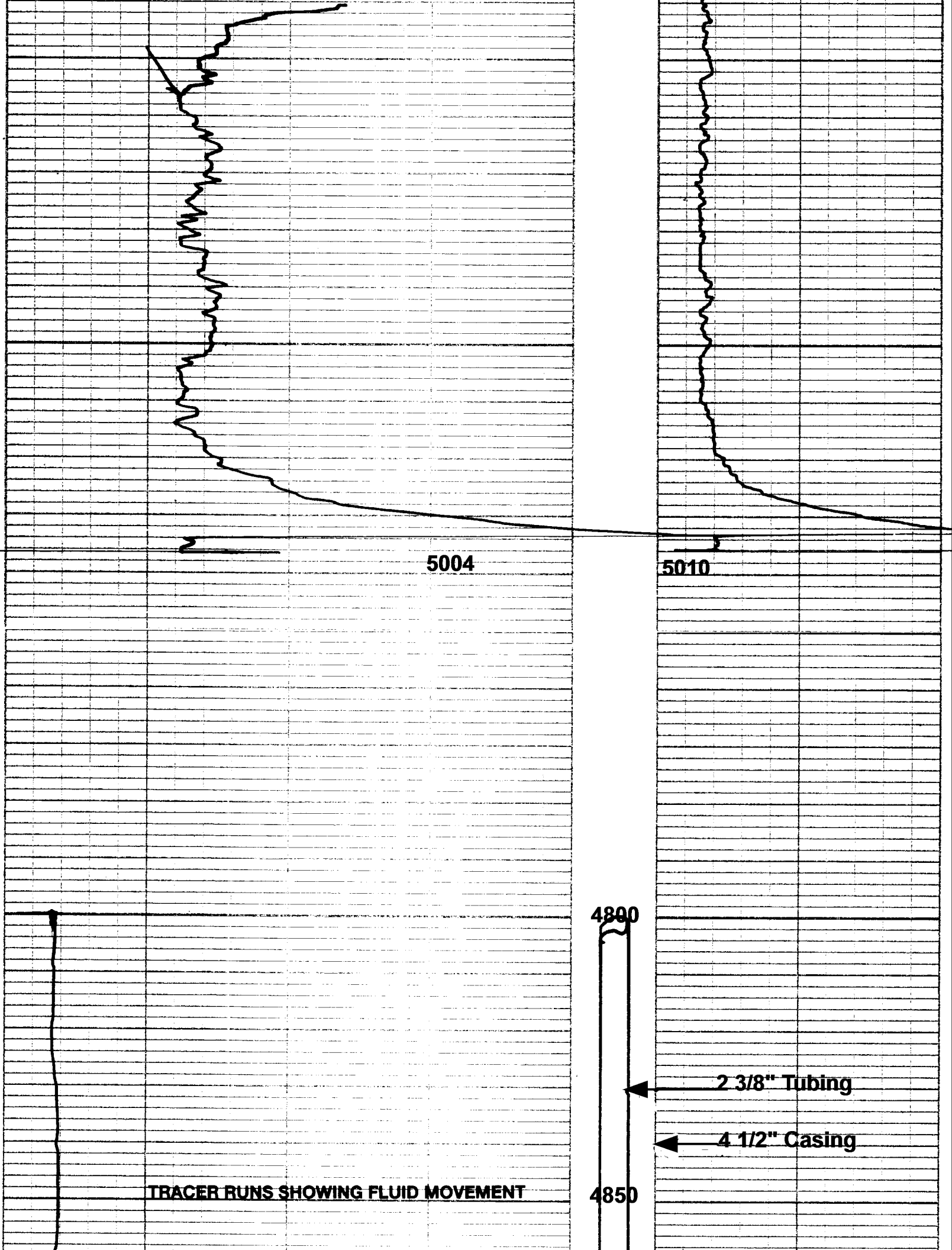
4999

5005

No Movement







5004

5010

4890

2 3/8" Tubing

4 1/2" Casing

4850

TRACER RUNS SHOWING FLUID MOVEMENT

BASE LINE

4900

INJECTION ZONES

4950

PACKER

:00

2

2:32

3

5:40

4

8:06

5

10:49

6

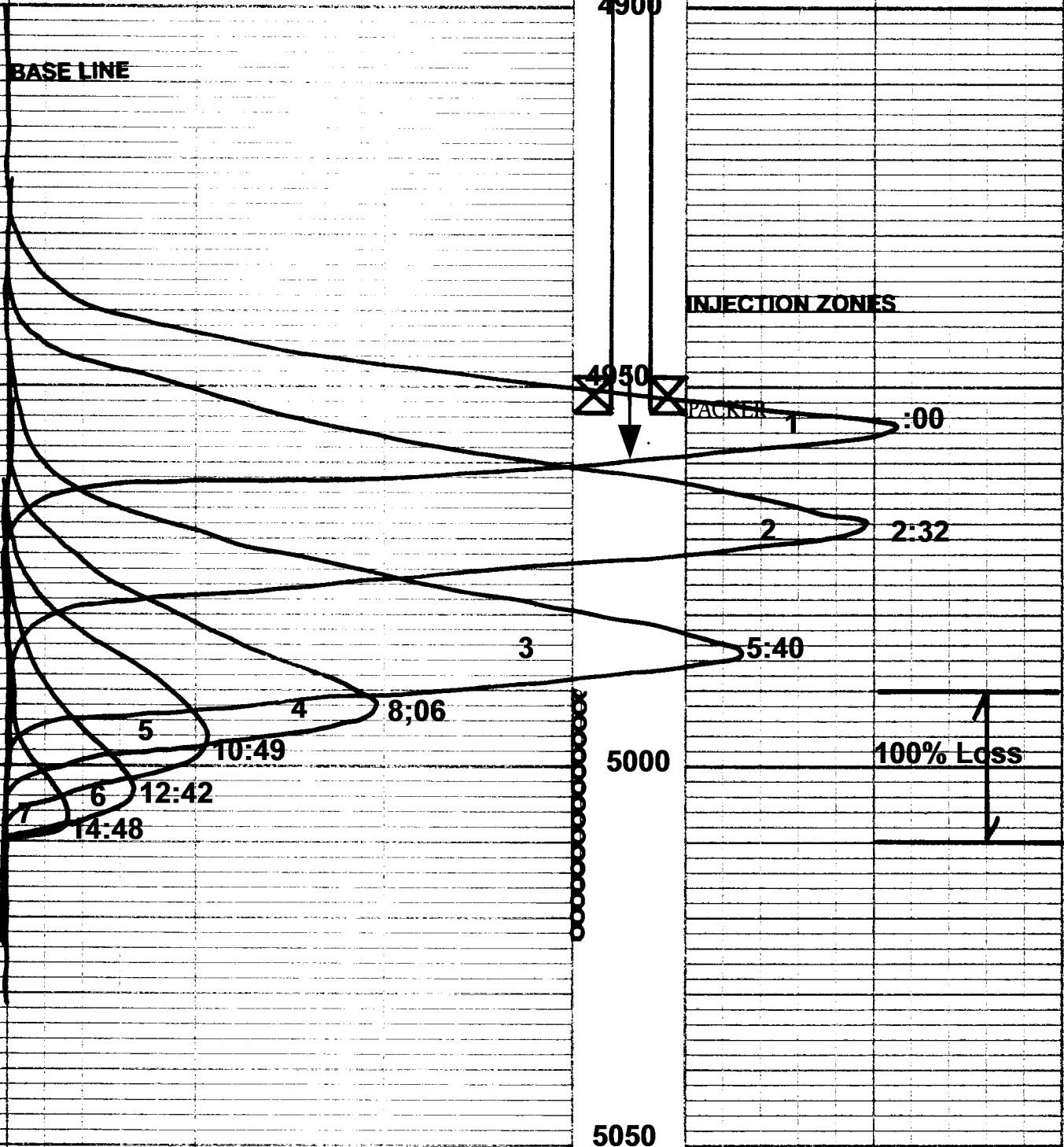
12:42

14:48

5000

100% Loss

5050



5100

LOW SENSITIVITY BASE LOG

T.D. REACHED

TEMPERATURE INCREASES →

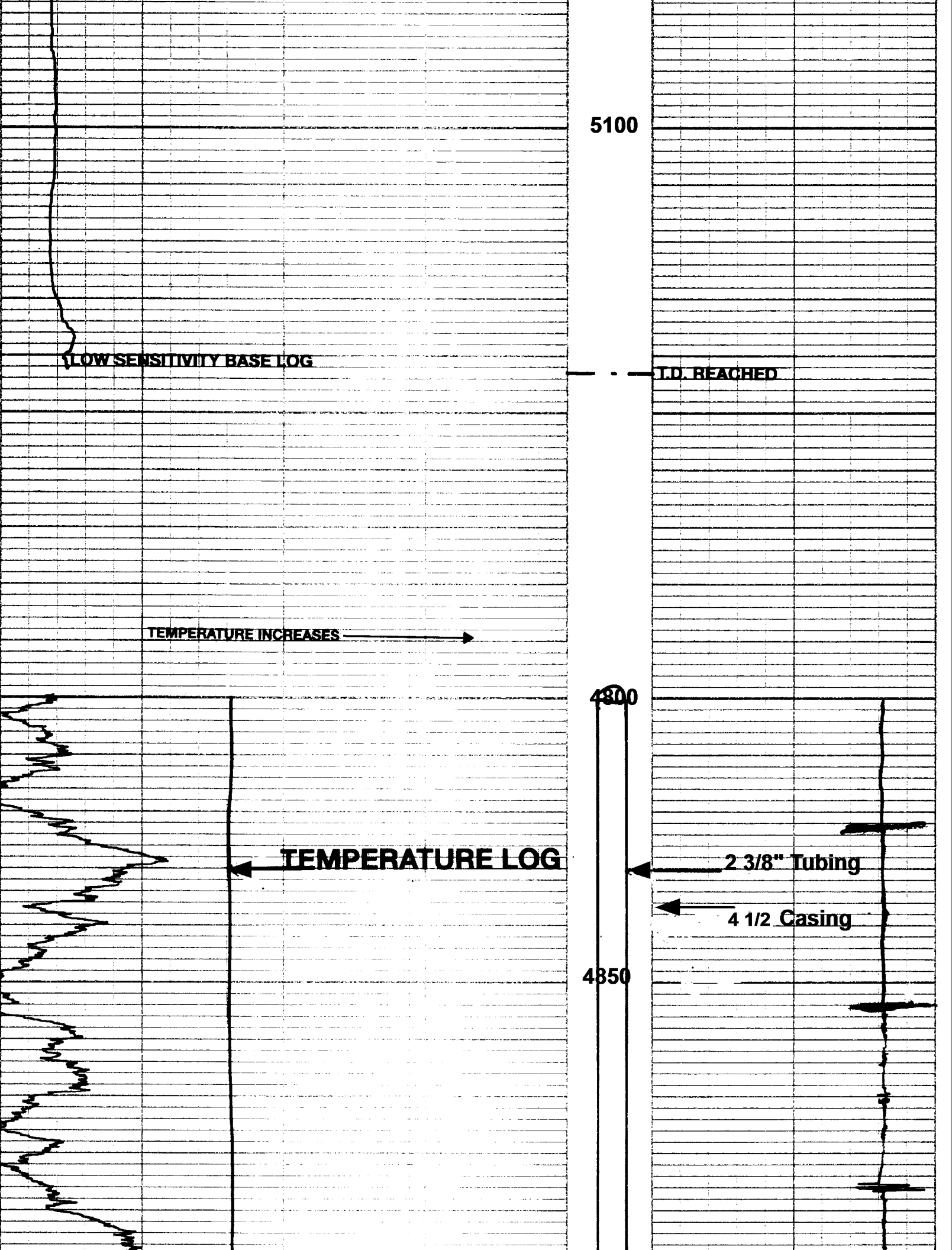
4800

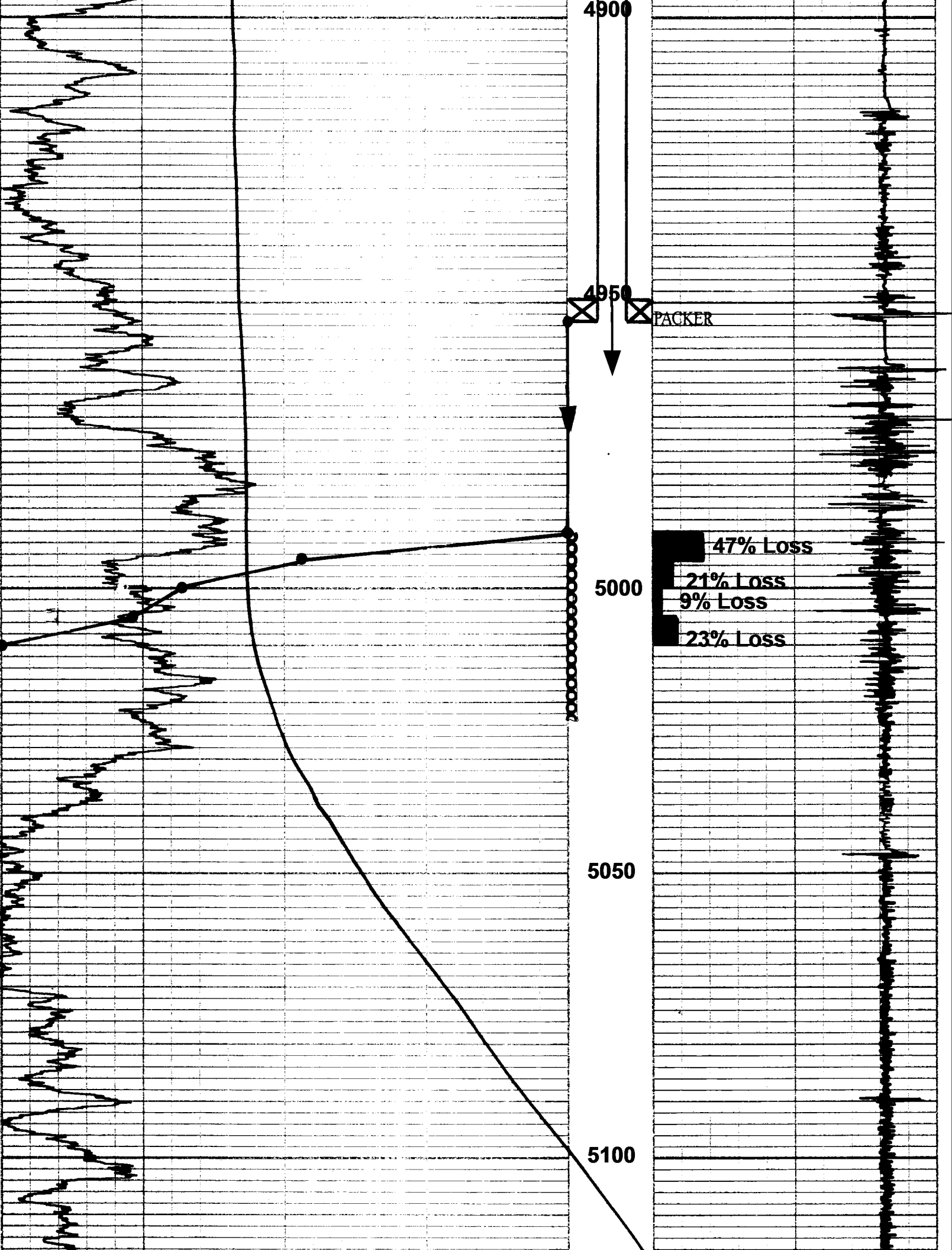
← TEMPERATURE LOG

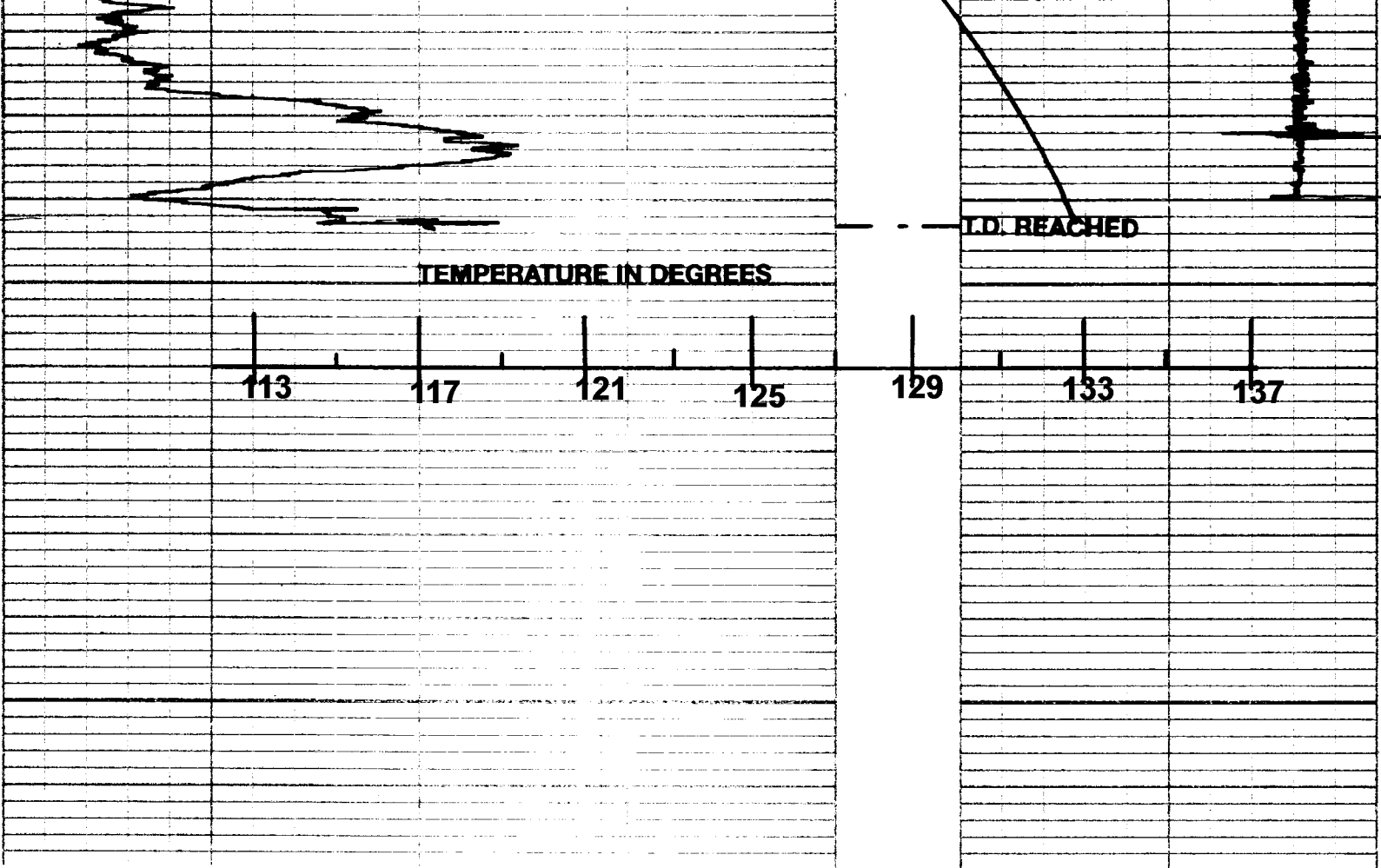
← 2 3/8" Tubing

← 4 1/2" Casing

4850







25      50      75      100

PERCENT OF INPUT

10   20   30   40   50

PERCENT PER FOOT

———— GAMMA LOG

----- R/A FOLLOW UP TRACER

→ RADIO ACTIVITY INCREASES

••• PERFORATIONS FROM CUSTOMERS RECORDS

—| SLOTS

~ CHANNEL

BEDELL #A-3  
 BEDELL FIELD  
 HASKELL CO., KS  
 9/12/2011

Sta. No.	Rate Bbls. Day	Depth. Interval	Capacity of Interval Bbls.	Injection Volume to Fill Interval Bbls.	Percent of Fluid Going Below Base of Interval	Percent of Fluid Lost in Interval	Press P.S.I.
1	145	4953-4990	0.6031	0.6031	100	0	42
2	"	4990-4995	0.0815	0.1537	53	47	"
3	"	4995-5000	0.0815	0.2546	32	21	"
4	"	5000-5005	0.0815	0.3543	23	9	"
5	"	5005-5010	0.0815	00	0	23	"

NOTE: NO LEAKS OR CHANNELS INDICATED UNDER EXISTING INJECTION CONDITIONS.

